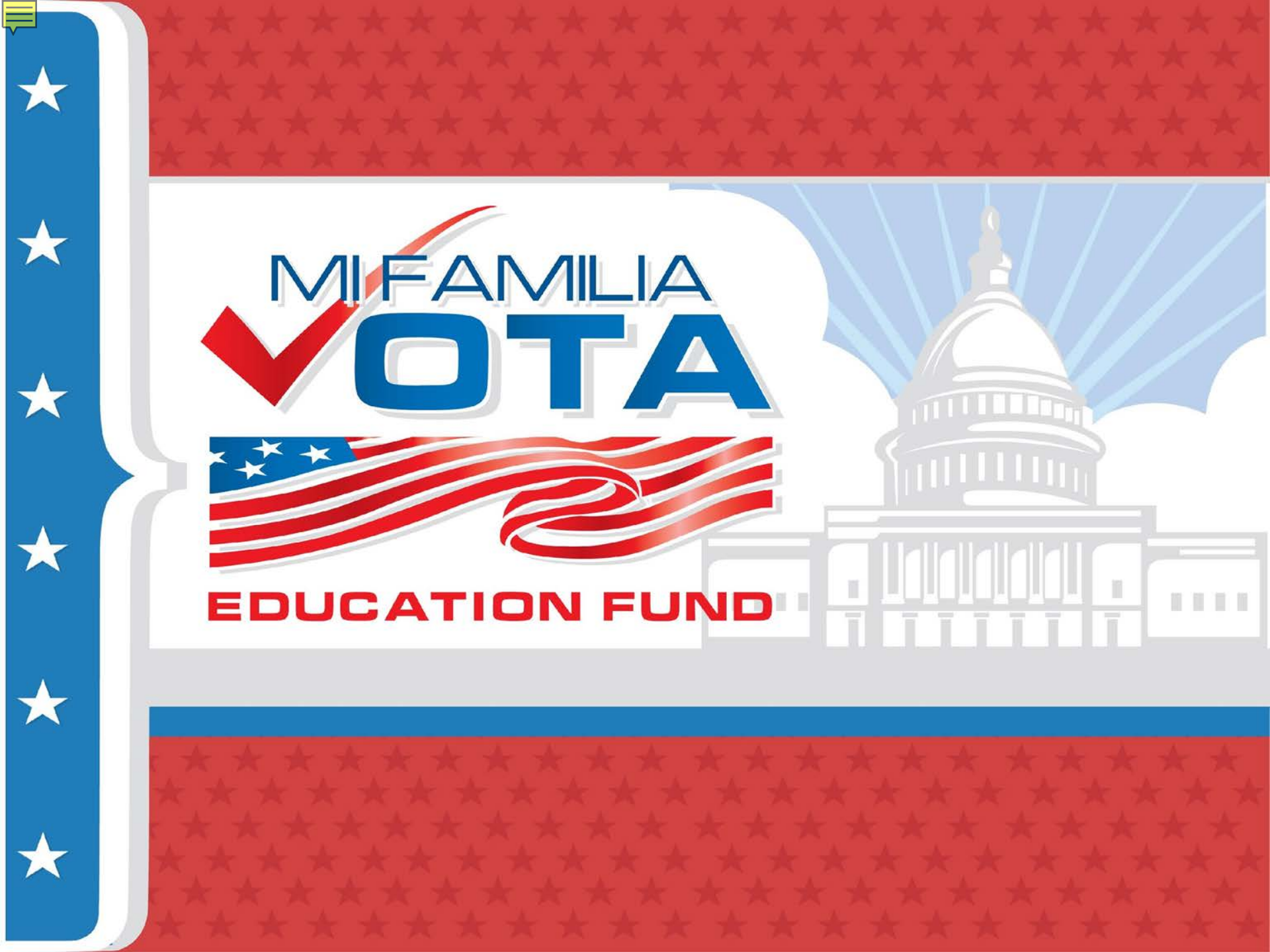


MI FAMILIA
VOTA



EDUCATION FUND





Mi Familia Vota Education Fund is a national organization working to unite the Latinx community and its allies to ensure social and economic justice through increased civic participation



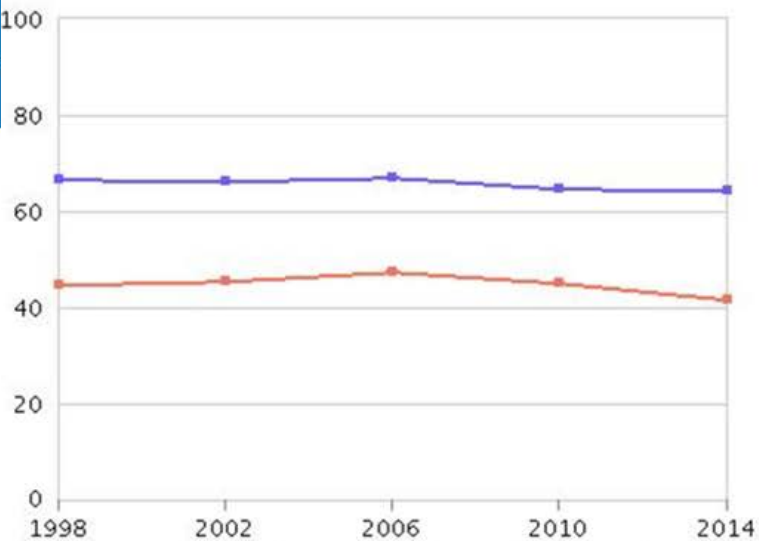
Mi Familia Vota Education Fund es una organización nacional no partidista, sin fines de lucro trabajando para unir la comunidad Latinx y sus aliados para asegurar justicia social y económica al incrementar participación cívica.



Total National Voter Turnout

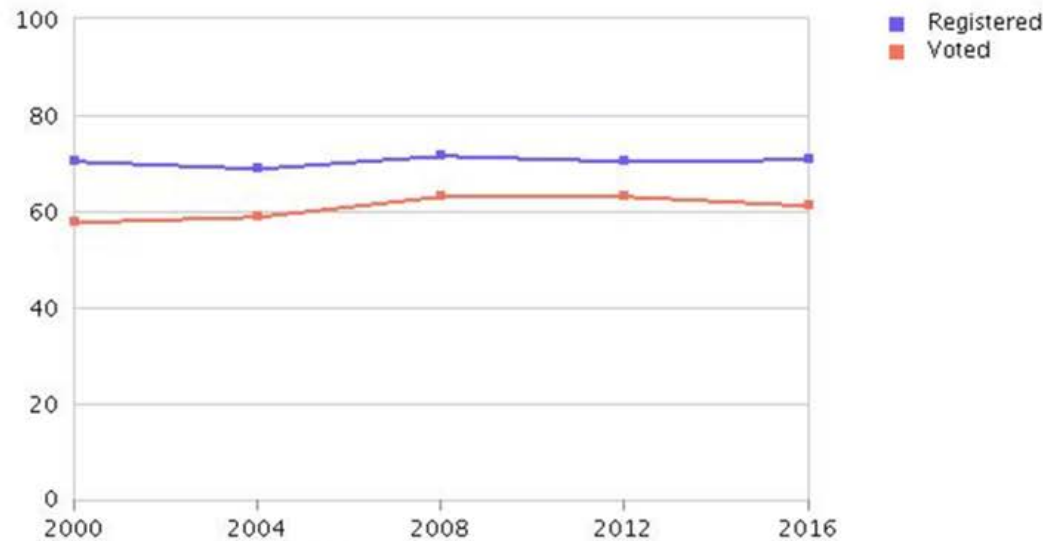
Número de Votantes Nacional

Voting and registration in congressional elections in United States



Source: Current Population Survey, Voting and Registration Supplement

Voting and registration in presidential elections in United States



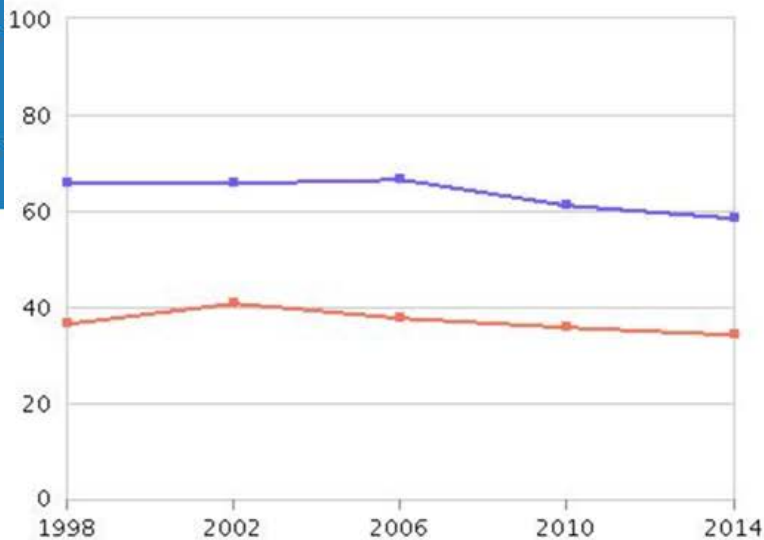
Source: Current Population Survey, Voting and Registration Supplement



Total Texas Voter Turnout

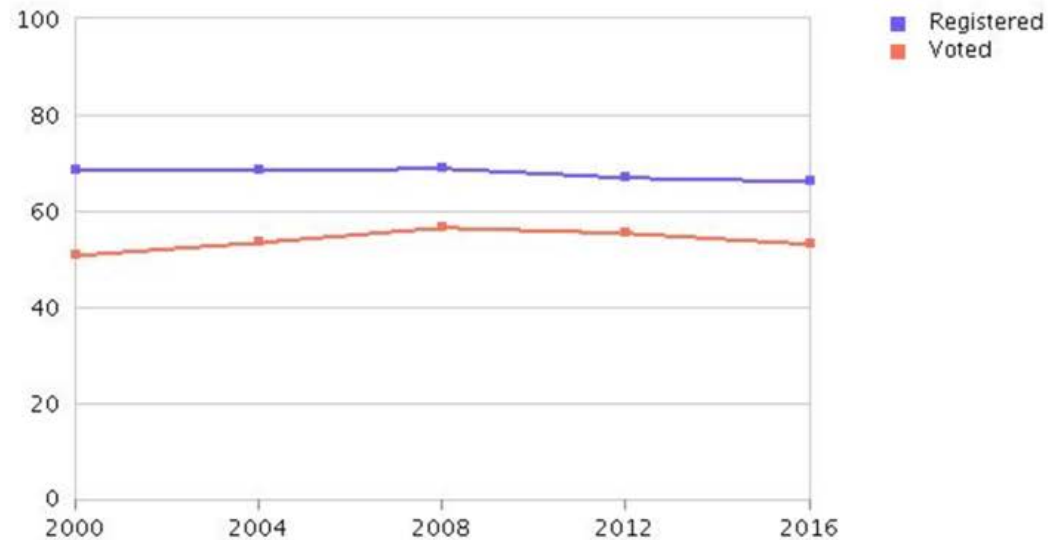
Número de Votantes en Texas

Voting and registration in congressional elections in Texas



Source: Current Population Survey, Voting and Registration Supplement

Voting and registration in presidential elections in Texas



Source: Current Population Survey, Voting and Registration Supplement





State vs. Local Voter Turnout

Número de Votantes Estatal vs. Local

Texas (statewide)

Number of adults (2016): 20,832,609

Number of votes cast (2016): 8,879,738

Texas turnout rate



Bexar County

Number of adults (2016): 1,414,221

Number of votes cast (2016): 586,051

Bexar turnout rate



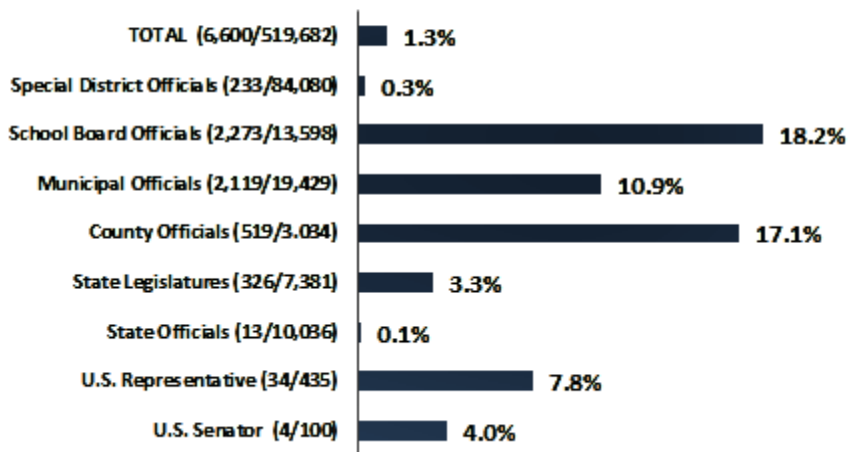
Note: Not all precincts have reported in 2016 and 2008 voting age population data may be incomplete for some counties

Source: U.S. Census Bureau, Population Division, The Texas Demographic Center population projections and The Texas Secretary of State



National Latinx Representation Representación Latinx Nacional

**Latino Elected Officials as Percentage
of Total Elected Officials
in the United States 2017**
(Latinos/Total)



NiLP calculates that while Latinx make up 19% of the US population, they only make up a tiny 1.3% of all elected officials in the country!

NiLP calcula que aunque Latinx son 19% de la población en los EEUU, nomas son el 1.3% de los oficiales electos en el país



National Latinx Representation Representación Latinx Nacional

Latino Elected Officials by Level of Office, 2017		
Level of Office	Number	Share of Total
U.S. Senator	4	0.1%
U.S. Representative	34	0.5%
State Officials	13	0.2%
State Senators	80	1.2%
State Representatives	246	3.7%
County Officials	519	7.9%
Municipal Officials	2,119	32.1%
Judicial/Law Enforcement Officials	879	13.3%
Education/School Board Officials	2,473	37.5%
Special District Officials	233	3.5%
Total	6,600	100.0%

Latino Elected Officials by Gender, 2017		
Male	4,199	63.6%
Female	2,401	36.4%
Total	6,600	100.0%



Consequences of no participation

Consecuencias por no participar

- Cuts to college financial aid programs. Colleges have reported losing highly qualified students.
 - Cuts to college funding=increasing tuition & limiting courses
 - Texas has the second largest population in elementary schools but the funding formulas are not keeping up with the high enrollment rates
-
- Recortes a programas de ayuda financiera para la Universidad. Colegios han reportado que han perdido estudiantes calificados.
 - Recortes a los fondos de colegios = incremento de cuotas y menos cursos
 - Texas tiene la segunda población más grande en las escuelas primarias, pero las fórmulas de financiamiento no se mantienen al ritmo de la incrementación de la población



The state keeps cutting funds, putting burden on local government

El estado sigue quitando fondos a el presupuesto de educación pasándole el costo a el gobierno local

Texas Divestment of Public Education

Who is Paying?

In 2007...

State 49%

51% Local

In 2017...

State 41%

59% Local

Percentage of State Budget Allocated to K-12 Public Education



In the last decade, state cuts to education and increases in property values have resulted in local communities footing the bill for K-12 public schools.

The result? Inadequate and inequitable resources for school children.

A B C **D** E F

In 2016, Texas received a 'D' on a national school finance report, with Texas ranking #45 in the country



www.idra.org

www.facebook.com/IDRAed

Intercultural Development Research Association
5815 Callaghan Road, Suite 101 • San Antonio, Texas 78228 • 210-444-1710





Census Censo

- Census data is used to determine congressional seats and redistricting at all levels of government
- Used to allocate \$600 billion in federal money every year
- La información del censo es usada para determinar el número de asientos congresionales y dibuja las líneas de distritos en todos los niveles de nuestro gobierno
- La información es usada para distribuir \$600 billones cada año



Census Data and the Fair Allocation of Federal Funds

Nearly \$590 billion in FY 2015 federal funding was distributed on the basis of Census-guided data.

Top 11 Census-Guided Federal Programs

Program	Amount (in billions)
Medicaid	\$312.0
Supplemental Nutritional Assistance Program	\$69.5
Medicare Part B – Physicians Fee Schedule Services	\$64.2
Highway Planning and Construction	\$38.3
Section 8 Housing Choice Vouchers	\$19.1
Title I Grants to Local Education Agencies	\$13.9
National School Lunch Program	\$11.6
Special Education Grants (IDEA)	\$11.2
State Children’s Health Insurance Program	\$11.1
Section 8 Housing Assistance Payments Program	\$9.2
Head Start/Early Head Start	\$8.3

Source: Andrew Reamer, *Counting For Dollars: The Role of the Decennial Census in the Geographic Distribution of Federal Funds*, initial analysis, George Washington University, June 2017



Census-Guided Federal Funds Annually Allocated to Selected States

State	Amount (in billions)
California	\$76.7
New York	\$53.2
Texas	\$43.3
Florida	\$29.3
Illinois	\$19.7
New Jersey	\$17.6
North Carolina	\$16.3
Georgia	\$13.7
Washington	\$13.7
Arizona	\$13.5
Colorado	\$8.1
New Mexico	\$6.2
Nevada	\$4.7





Census/Censo 2010

- Census 2010 missed more than 400,000 young Latinx children
- El censo del 2010 no contó más de 400,000 niños Latinx

Undercount of very young Latino children is concentrated in a few states

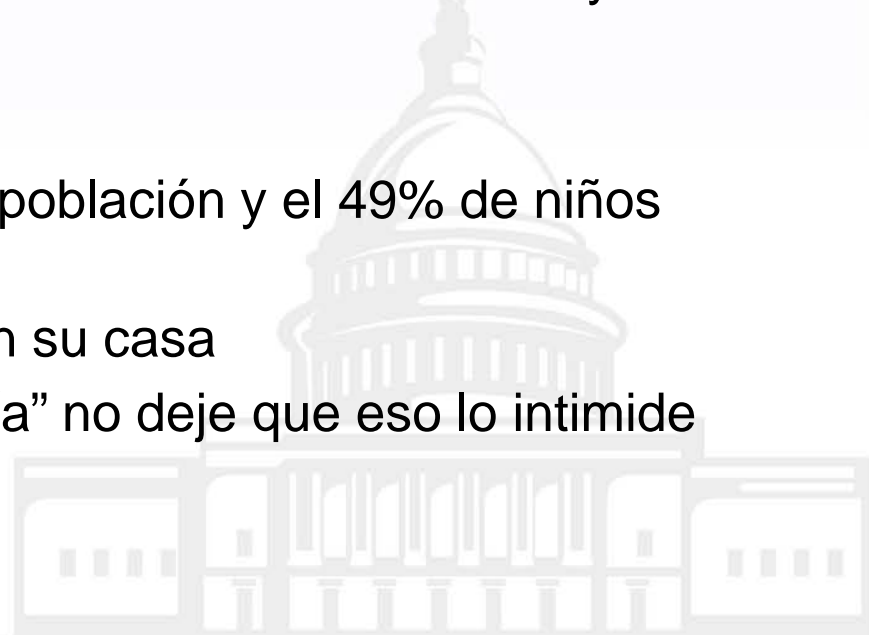
State	Net Undercount	Share of Net Undercount
California	-113,000	29%
Texas	-75,000	19%
Florida	-44,000	11%
Arizona	-32,000	8%
New York	-21,000	5%
Georgia	-21,000	5%
Total for Six States	-306,000	78%*
United States	-391,000	

**Total share is greater than sum of individual states because of rounding.*



Census/Censo 2020

- Latinx make up 39% of Texas and 49% of Texas' children
 - Make yourself count! Include everyone in household
 - Will include “citizenship” question, do not let that intimidate you
-
- En Texas Latinx son el 39% de la población y el 49% de niños son Latinx
 - ¡Hagase contar! Incluya a todos en su casa
 - Incluirá pregunta sobre “ciudadanía” no deje que eso lo intimide hacerse contar



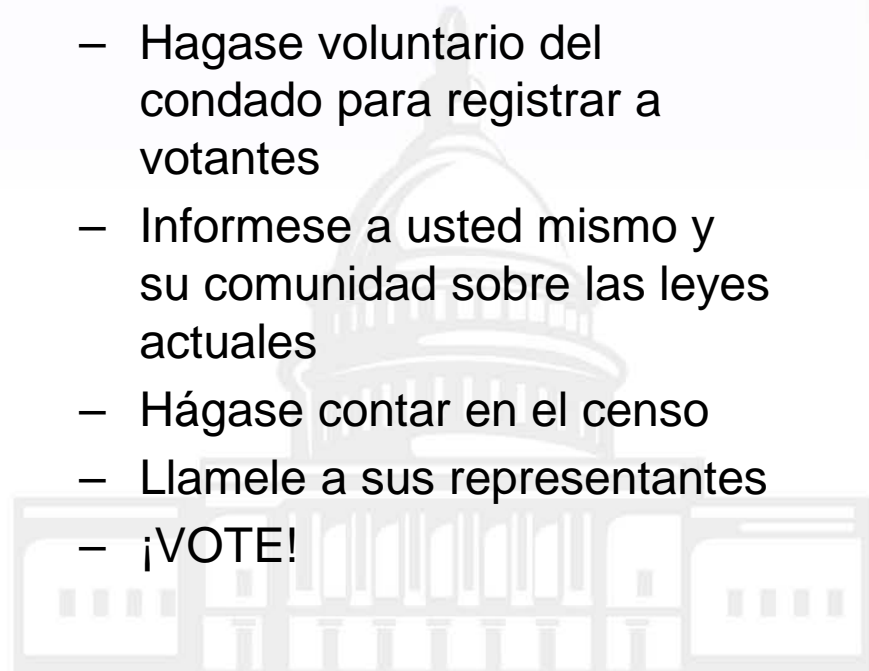


When can I get involved & what's happening right now?

¿Cómo me puedo involucrar y que está pasando ahorita?

- Volunteer with MFV
- Become a volunteer deputy registrar
- Inform yourself and community about current laws, ordinances and such
- Make yourself count in the census
- Call your representatives
- VOTE!

- Sea voluntario con MFV
- Hagase voluntario del condado para registrar a votantes
- Informese a usted mismo y su comunidad sobre las leyes actuales
- Hágase contar en el censo
- Llamele a sus representantes
- ¡VOTE!





Upcoming Elections Próximas Elecciones

- Last day to Register for Runoff elections: April 23rd
- Primary Runoff Elections: May 22nd
 - Early voting: May 14 to May 18
- Midterm Elections: November 6th
 - Early voting: Oct 22 to Nov 2
- Ultimo dia para registrarse: 23 de abril
- Elecciones primarias de desempate: 22 de mayo
 - Votaciones tempranas: 14 18 de mayo
- Elecciones de medio period: 6 de noviembre
 - Votaciones tempranas: 22 de octubre a el 2 de noviembre



To register you must...

Para registrarse debe...

- Be at least 17 years old and 10 months
 - Be a U.S. Citizen
 - Not be a felon and if you are, must have served your time or finished your parole or probation.
 - Live in Bexar county
 - if not, raise your hand and you get another form
- Tener por lo menos 17 años y 10 meses de edad
 - Ser ciudadano del los EEUU
 - No tener una felonía, si la tiene, debe haber cumplido su tiempo en la cárcel o concluido su periodo de libertad condicional.
 - Vivir en el condado de Bexar
 - Si no levante su mano porque eso requiere otra forma



MI FAMILIA
VOTA



EDUCATION FUND



Thank you / Muchas Gracias

